



Accompanying Engr  
letter dated Feb. 10, 1892  
4<sup>th</sup> Dist. 2 A  
Filed Mar. 5, 1892

Geo. W. ...  
Civil Engineer

5-20-92

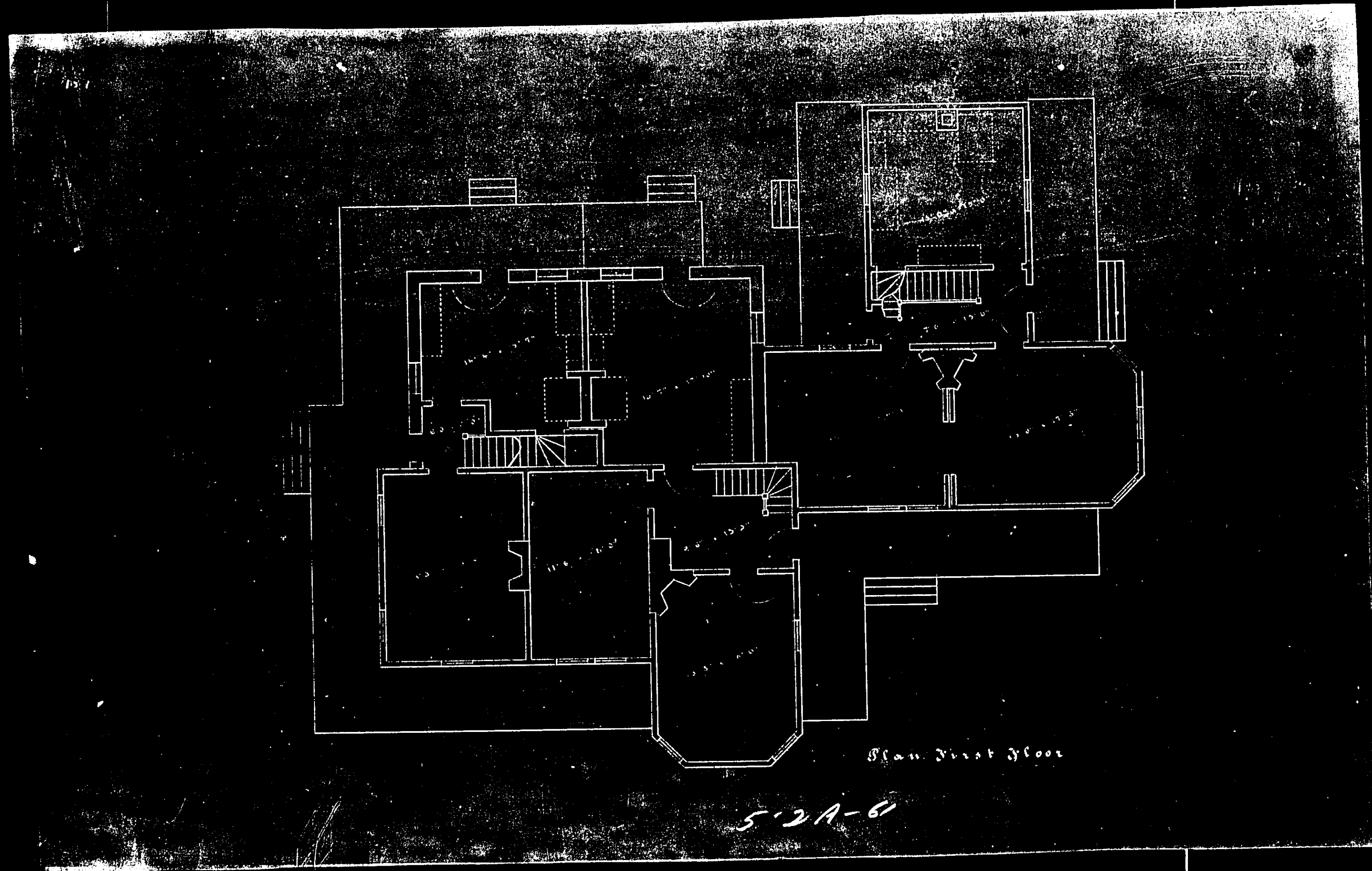
Sheepers' Dwellings  
Olathe, Kan. Sta.  
1892



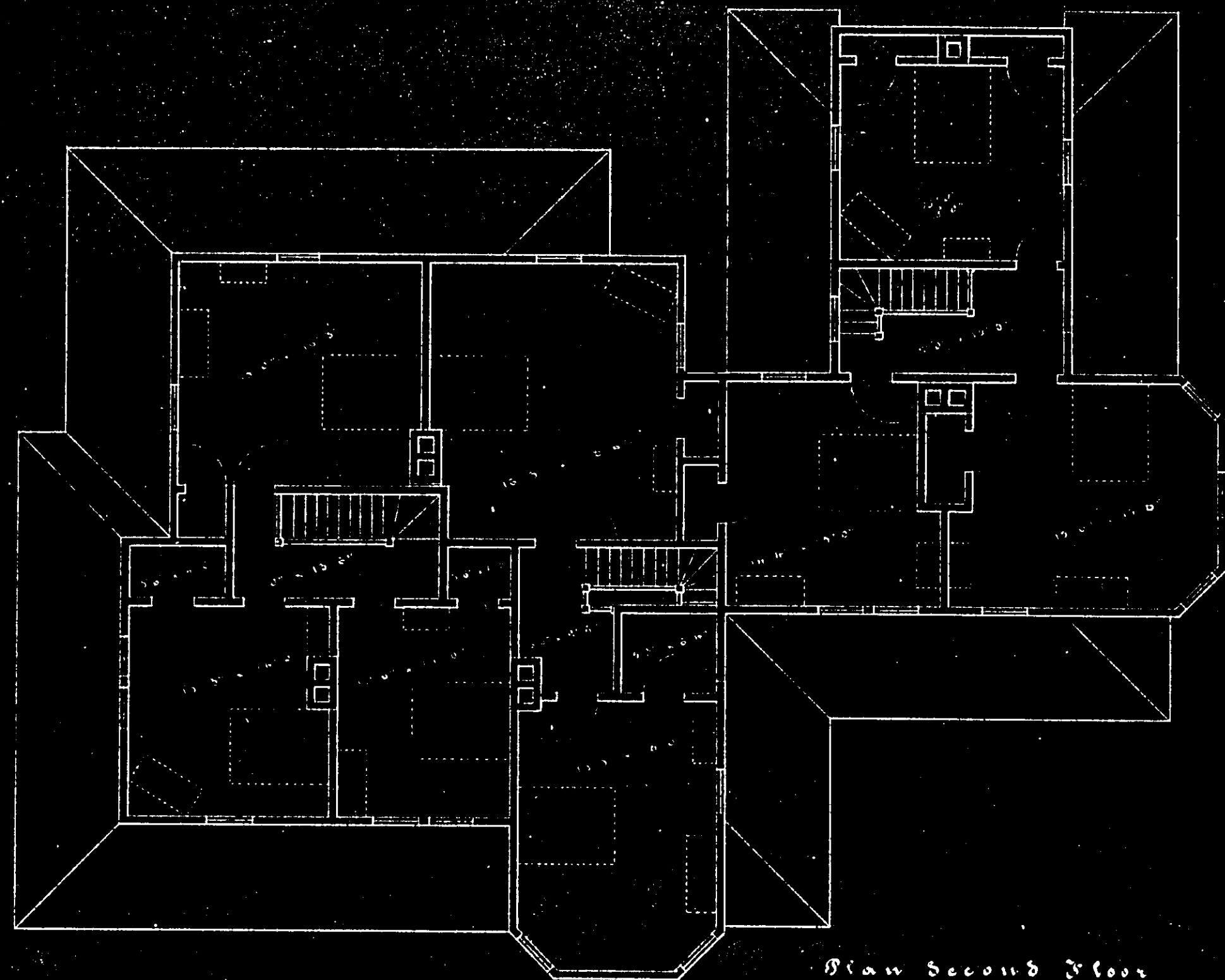
South East Elevation

5-29-60

5 2 A



5 2 A



Plan Second Floor

52A-62



Present S. E. Elevation

512A-13

5 2 A

101

6



Present N. E. Elevation

5-2A-64

5 2 A

