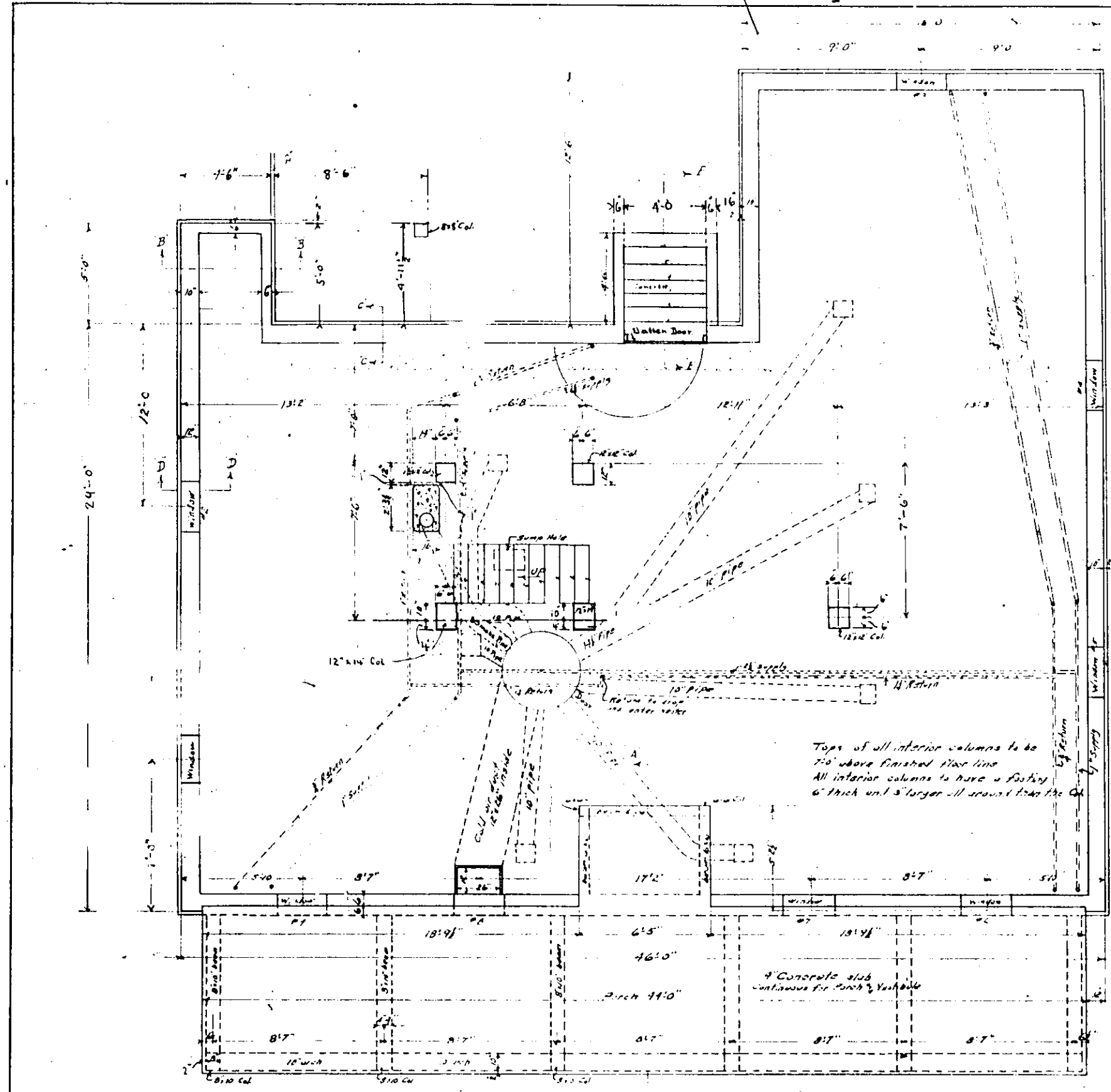


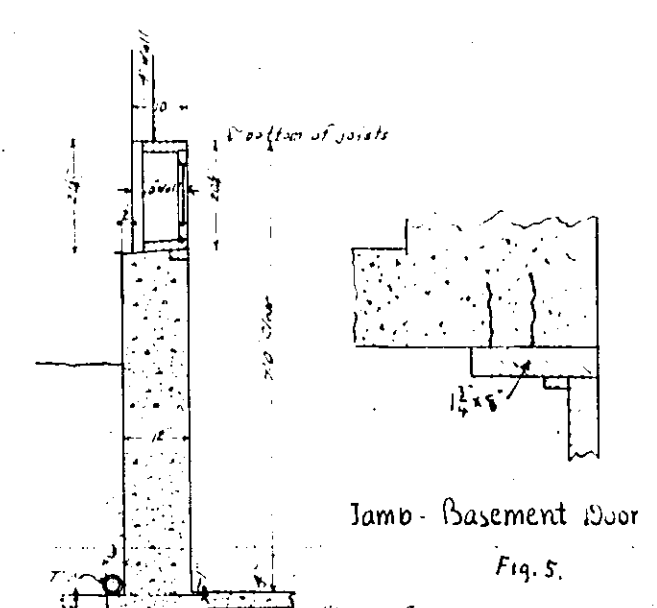
Scale 1/4"

Order by Board	22-258	Approved by Board	1-16-09
Prepared by	W. G. S.	Submitted to Board	April 8-09
Drawn	JEN 1-16-09	Approved by Board	Light Keepers Dwellings Y-Shell or Range Lights
Traced	JEN 2-9-09	Remarks	Similar type to be used for Assisting Lt. See 10- and Bellevue Range floor of 5th Deck with foundation ending (see spec)
Checked	RLH 3-18-09		
Approved	W. G. S. 3-23-09		
Corrected			
Cor. checked by			
Cor. approved by			

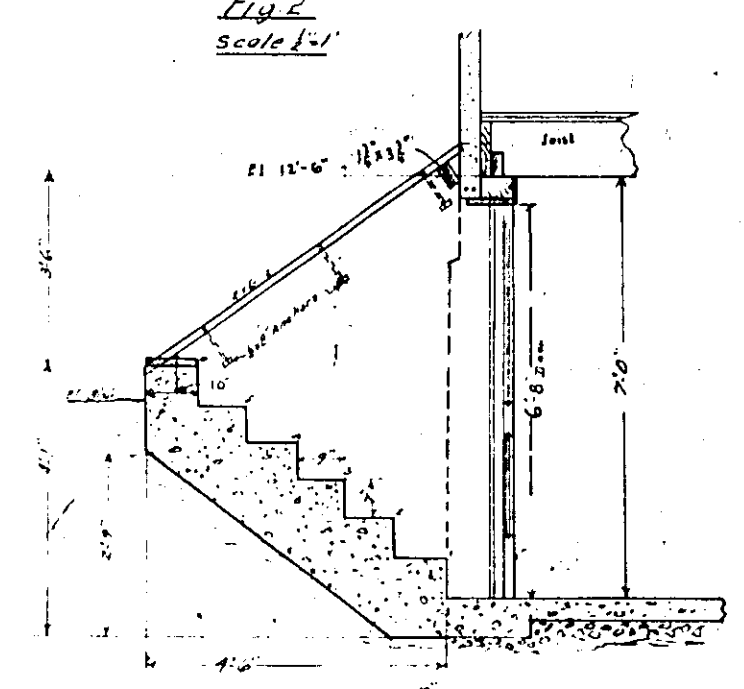
Front Elevation
Dwelling



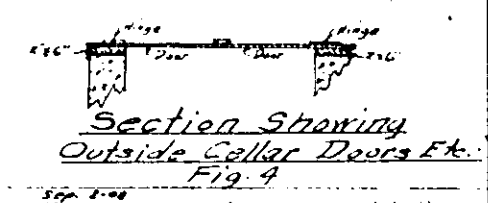
Foundation and Heating System
Fig 1
Scale 1/4" = 1'-0"



Section D-D
Fig 2
Scale 1/4" = 1'-0"



Section E-E
Fig 3
Scale 1/4" = 1'-0"



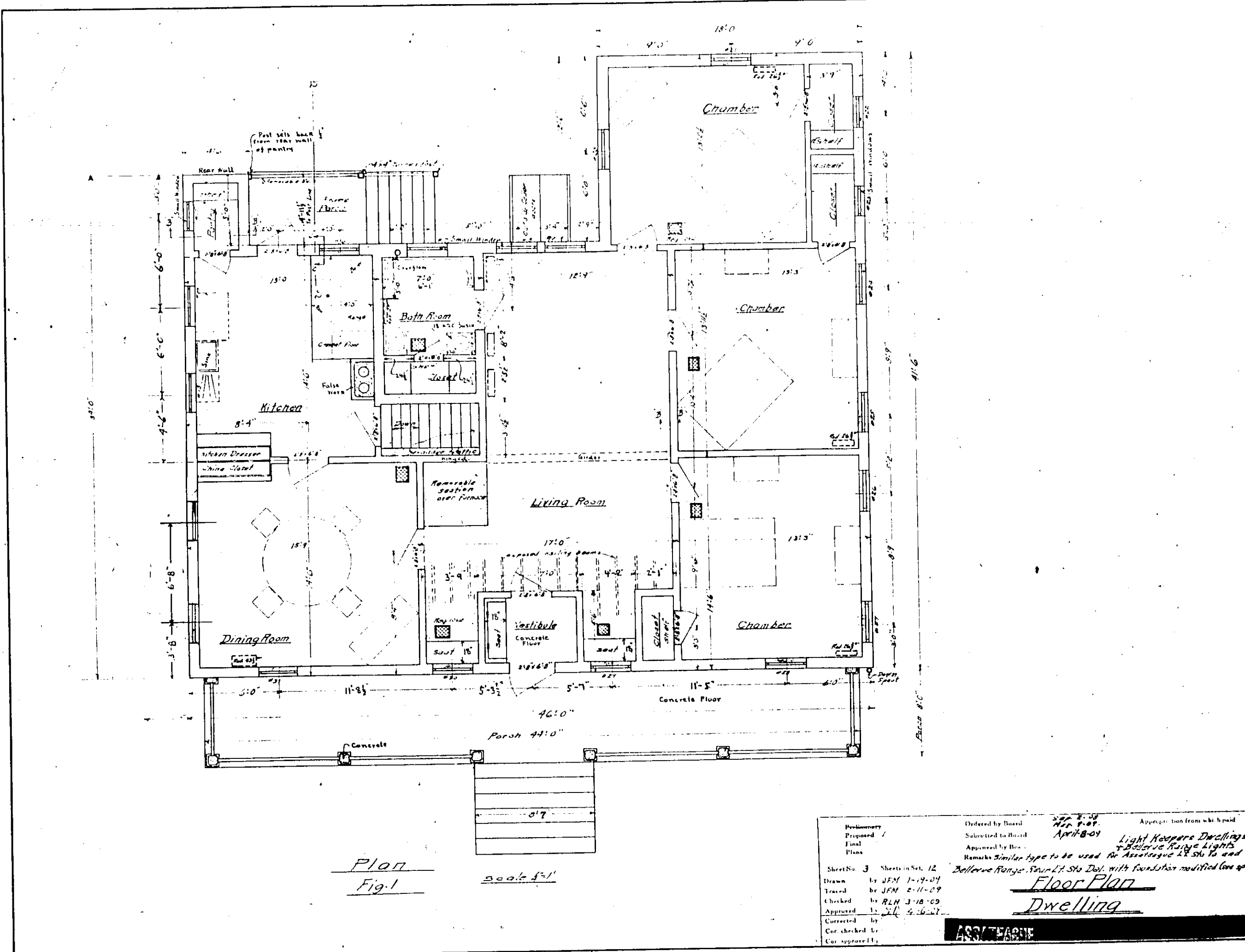
Section Showing
Outside Collar Doors Etc.
Fig 4

Proposed by	Checked by	Approved by
Drawn by	Checked by	Approved by
Traced by	Checked by	Approved by
Corrected by	Checked by	Approved by
Conformed to	Checked by	Approved by
Conformed to	Checked by	Approved by

Project: Light House Dwelling
 Date: 1-21-09
 Scale: 1/4" = 1'-0"
 Remarks: Similar type to be used for Ardenwood St. No. 12 and Bolter's Range Row 11 St. Det with foundation modifications.

Foundation Etc Dwelling

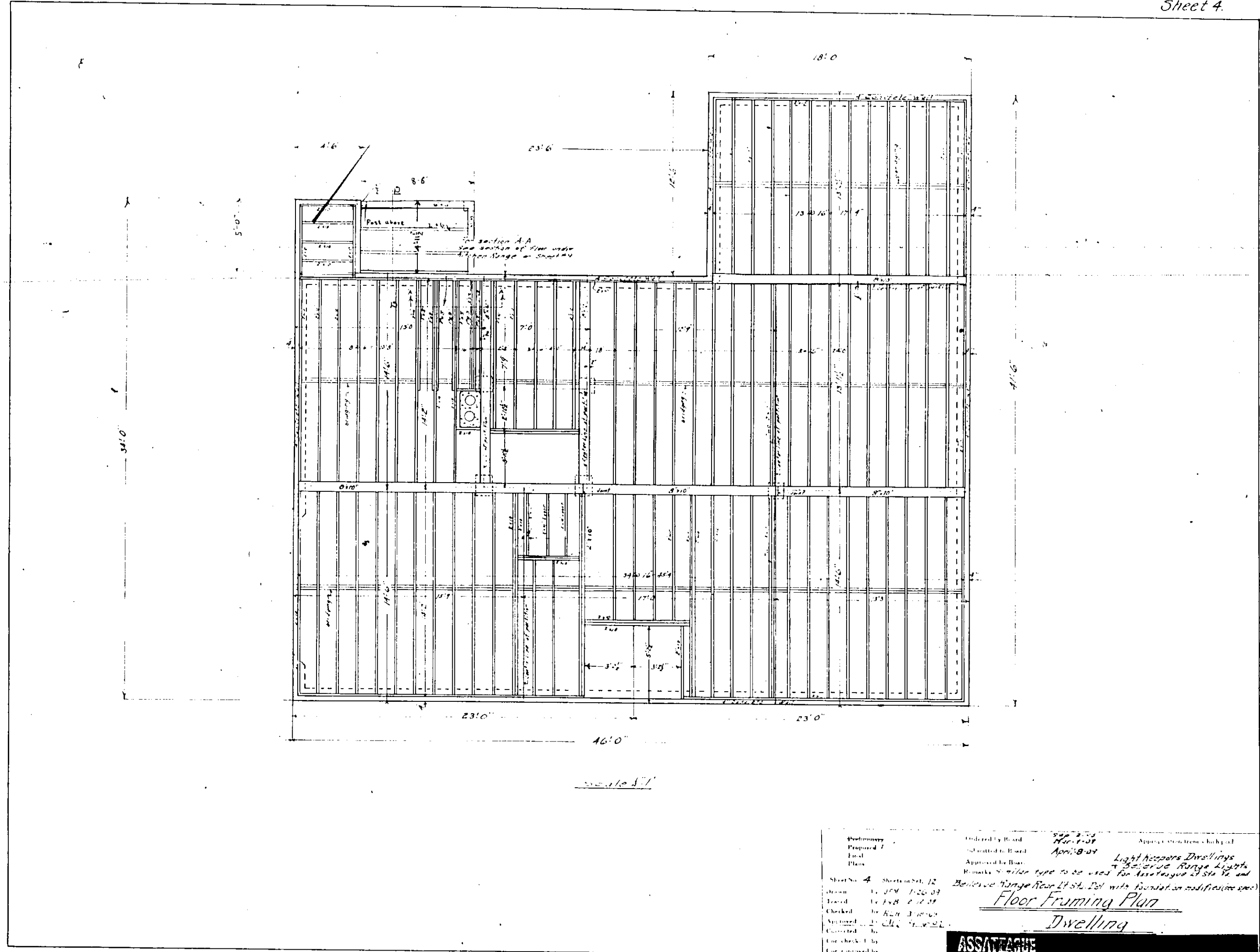
P 1204



Plan Fig-1 2006 4-1

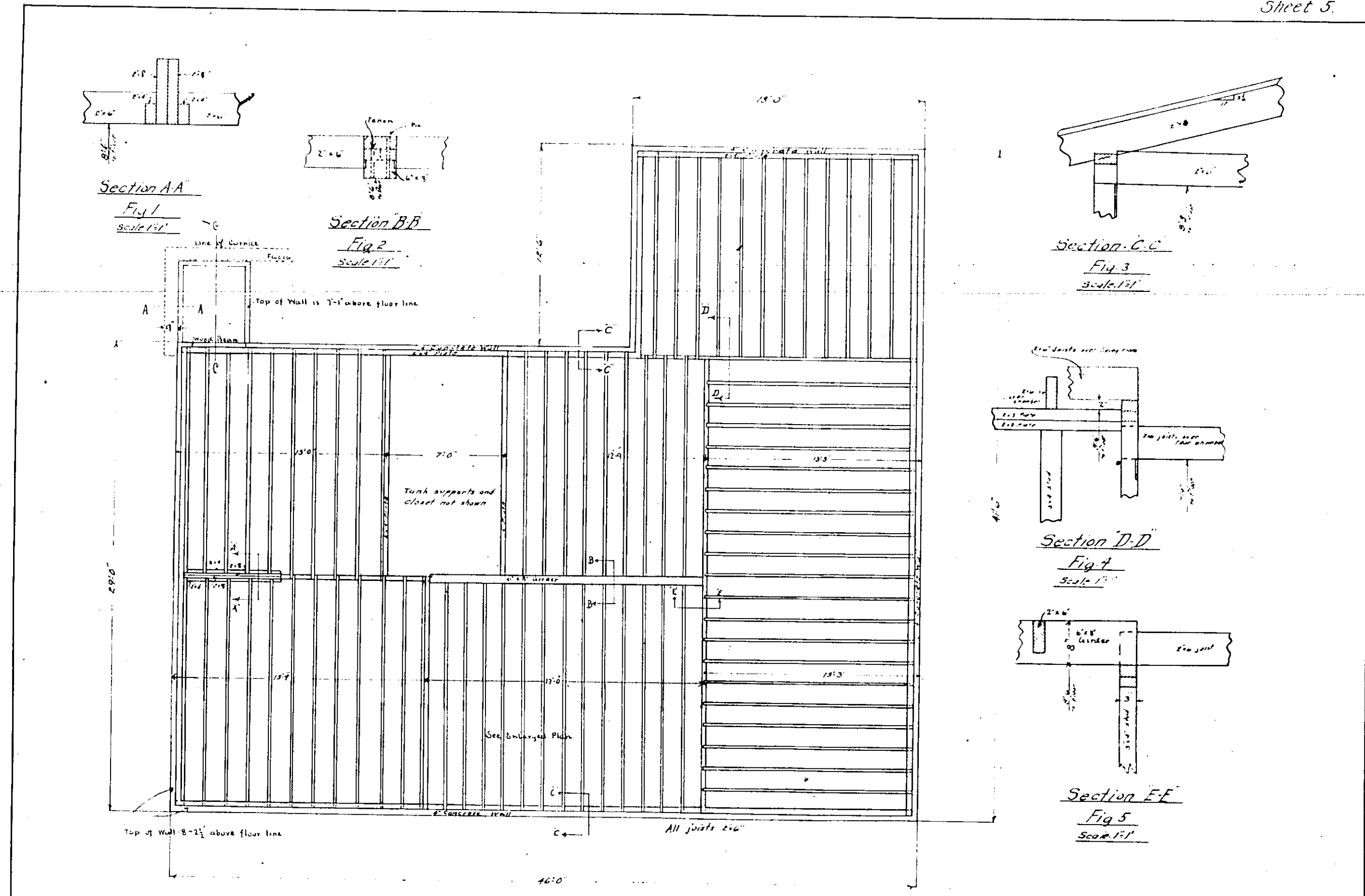
Proposed by: *W. F. S.*
 Prepared by: *W. F. S.*
 Final Plan: *April 8-09*
 Approved by: *Light Keeper's Dwellings*
Bellevue Range Lights
Remarks: Similar type to be used for Assistant Lt. Sigsbee and
Bellevue Range, No. 17 Sigsbee, with foundation modified (see spec.)
Floor Plan
Dwelling
 Sheet No. 3 of 12
 Drawn by: *JEM 1-10-09*
 Traced by: *JEM 2-11-09*
 Checked by: *RLH 3-18-09*
 Approved by: *W. F. S.*
 Contracted by: *ASSOCIATION*
 Cost checked by: *ASSOCIATION*
 Cost approved by: *ASSOCIATION*

11203



Prepared by	Checked by	Approved by	Approved by
Planned by	Checked by	Approved by	Approved by
Drawn by	Checked by	Approved by	Approved by
Sheet No. 4	Sheet No. 12	Sheet No. 12	Sheet No. 12
Date	Date	Date	Date
Checked	Checked	Checked	Checked
Approved	Approved	Approved	Approved
Checked	Checked	Checked	Checked
Approved	Approved	Approved	Approved
Checked	Checked	Checked	Checked
Approved	Approved	Approved	Approved

Light House Dwellings
 250-100 Range Light
 Building
 Floor Framing Plan
 Dwelling
ASSATZAGUE



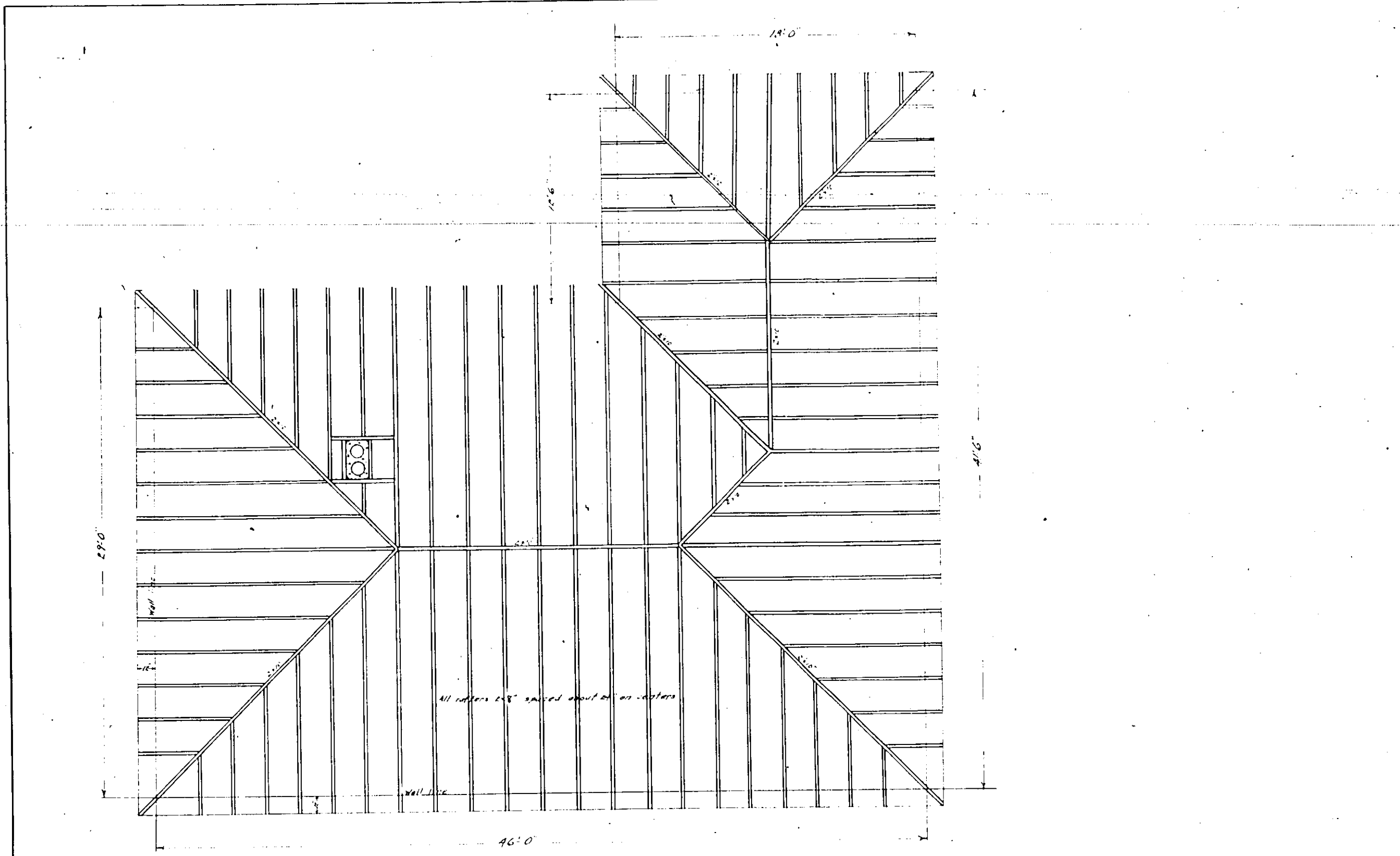
Ceiling Framing Plan
Fig. 6
Scale 1/4" = 1'-0"

Prepared by	Checked by	Approved by	Order by	Approved by
Drawn by	Checked by	Approved by	Order by	Approved by
Traced by	Checked by	Approved by	Order by	Approved by
Erased by	Checked by	Approved by	Order by	Approved by
Revised by	Checked by	Approved by	Order by	Approved by
Revised by	Checked by	Approved by	Order by	Approved by
Revised by	Checked by	Approved by	Order by	Approved by
Revised by	Checked by	Approved by	Order by	Approved by

Order by: W. H. H. H.
 Submitted by: April 8-27
 Approved by: [Signature]
 Checked by: [Signature]
 Approved by: [Signature]
 Order by: [Signature]
 Submitted by: [Signature]
 Approved by: [Signature]
 Checked by: [Signature]
 Approved by: [Signature]

Sheet No. 5 of 12
 Drawn by [Signature]
 Traced by [Signature]
 Erased by [Signature]
 Revised by [Signature]
 Revised by [Signature]
 Revised by [Signature]
 Revised by [Signature]

Believe Range Room 11-24-25 with dimension 12'-0" x 12'-0"
Ceiling Framing
Dwelling
ASSATEQUE



Scale 1/4" = 1'

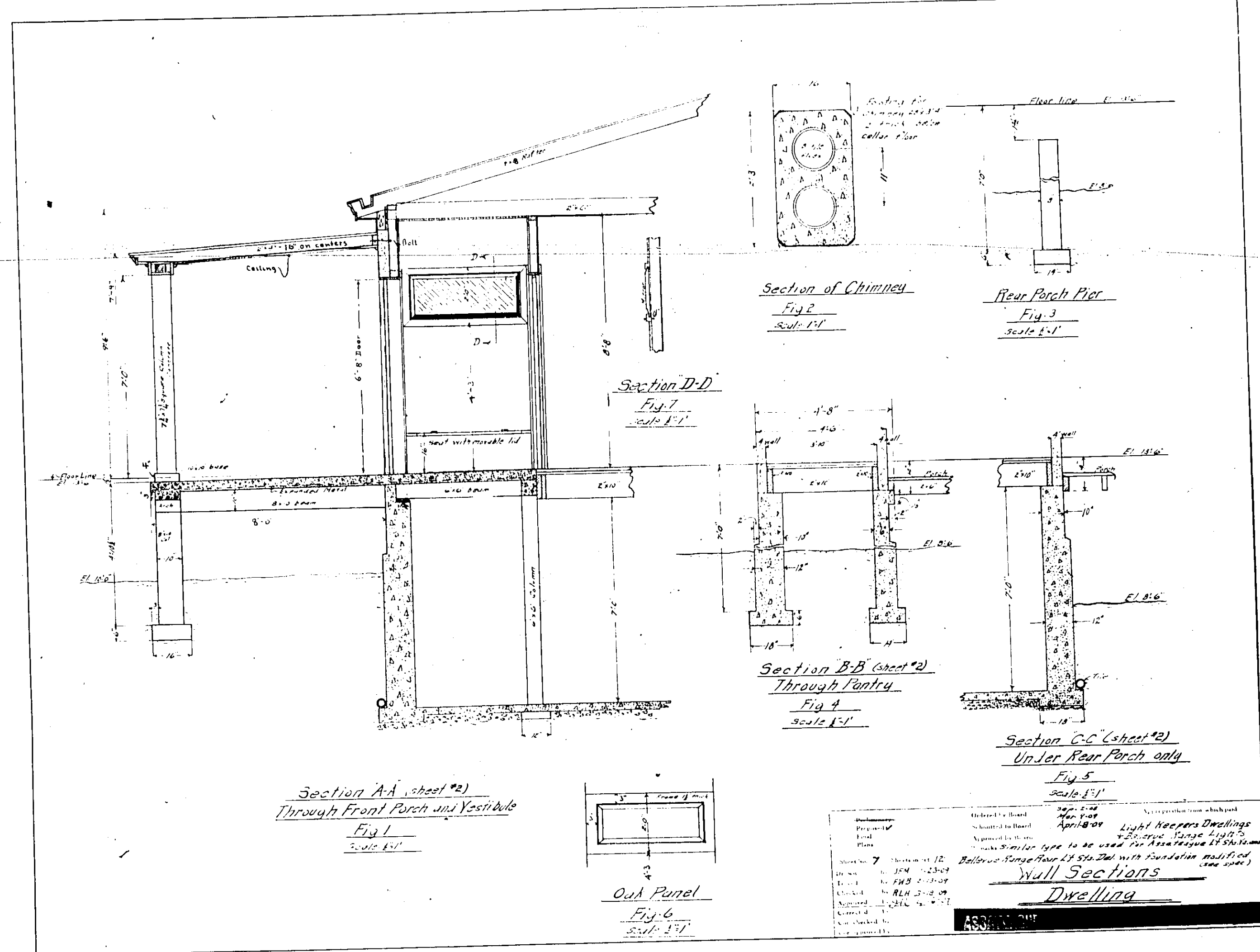
Prepared by	Checked by	Approved by	Drawn by	Traced by	Checked by	Approved by
			JEM 1-28-09	DNB 4-10-09	RLM 3-18-09	

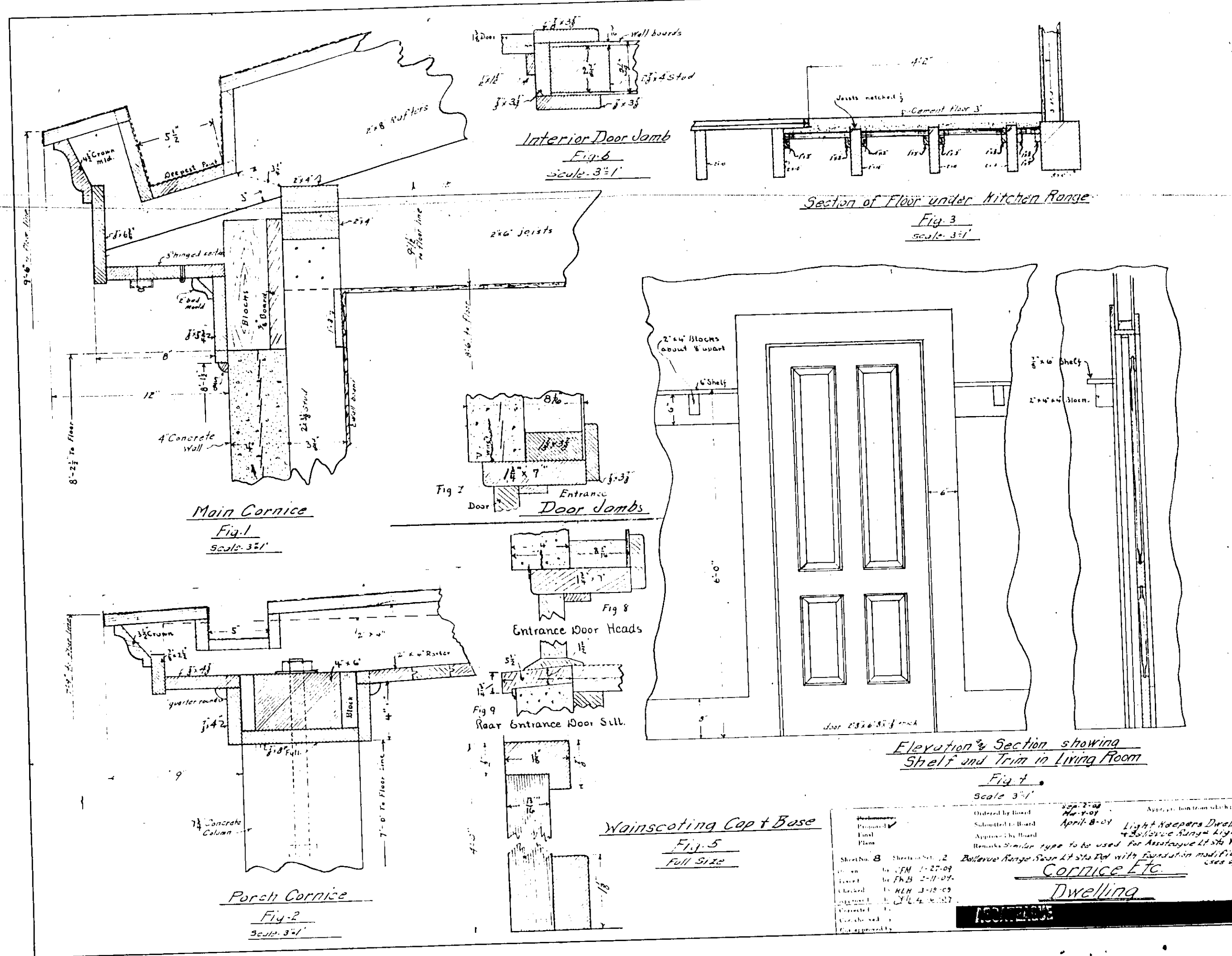
Ordered by Board: 220-2-04
 Submitted to Board: No. 101
 Approved by Board: April 8-09
 Remarks: Similar type to be used for Assateague I & II. See 220-2-04.

Sheet No. 6 of 12
 Project: Light Keepers Dwellings
 Location: 1/2 Ballerup Range Light
 Notes: Ballerup Range Range Light with foundation modified (see 220-2-04)

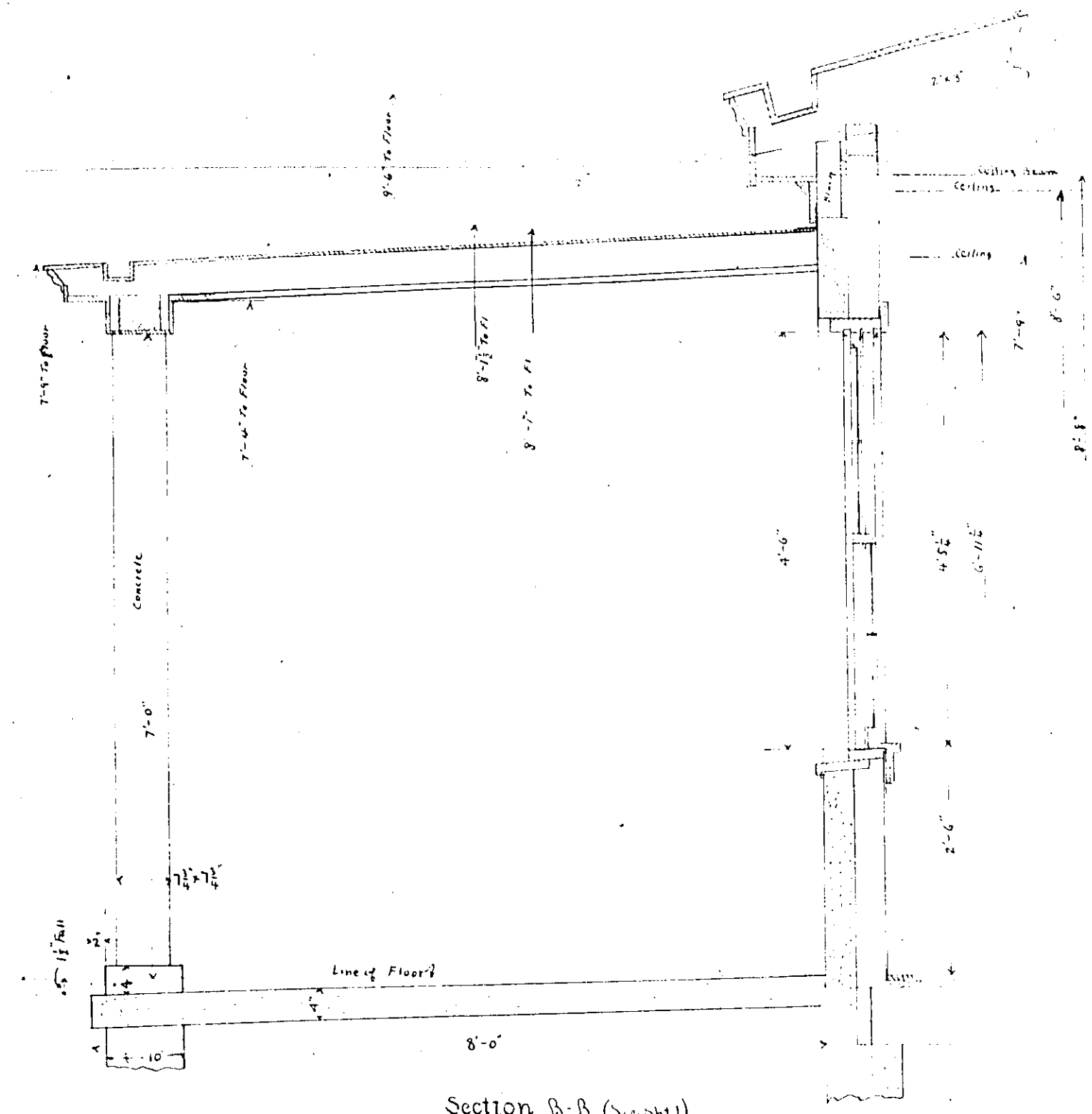
Roof Framing
Dwelling

ASSATEAGUE

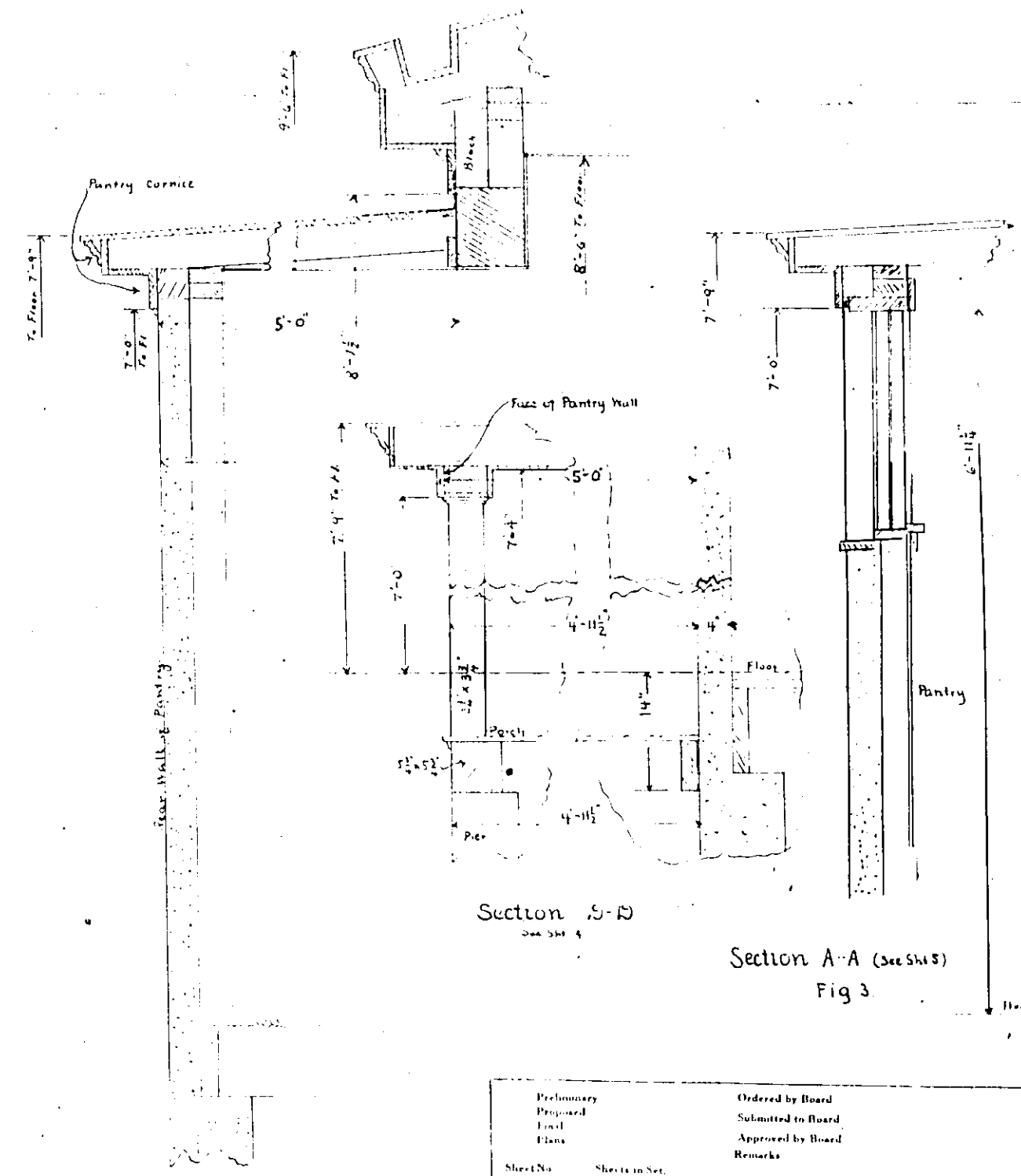




Sheet No.	Date	By	Checked by	Approved by	Remarks
8	3-18-09	Light keeps Dwelling
9	3-18-09	Balance Range Light
10	3-18-09	Balance Range Light
11	3-18-09	Balance Range Light
12	3-18-09	Balance Range Light
13	3-18-09	Balance Range Light
14	3-18-09	Balance Range Light
15	3-18-09	Balance Range Light
16	3-18-09	Balance Range Light
17	3-18-09	Balance Range Light
18	3-18-09	Balance Range Light
19	3-18-09	Balance Range Light
20	3-18-09	Balance Range Light
21	3-18-09	Balance Range Light
22	3-18-09	Balance Range Light
23	3-18-09	Balance Range Light
24	3-18-09	Balance Range Light
25	3-18-09	Balance Range Light
26	3-18-09	Balance Range Light
27	3-18-09	Balance Range Light
28	3-18-09	Balance Range Light
29	3-18-09	Balance Range Light
30	3-18-09	Balance Range Light



Section B-B (See sheet 1)
Fig 1

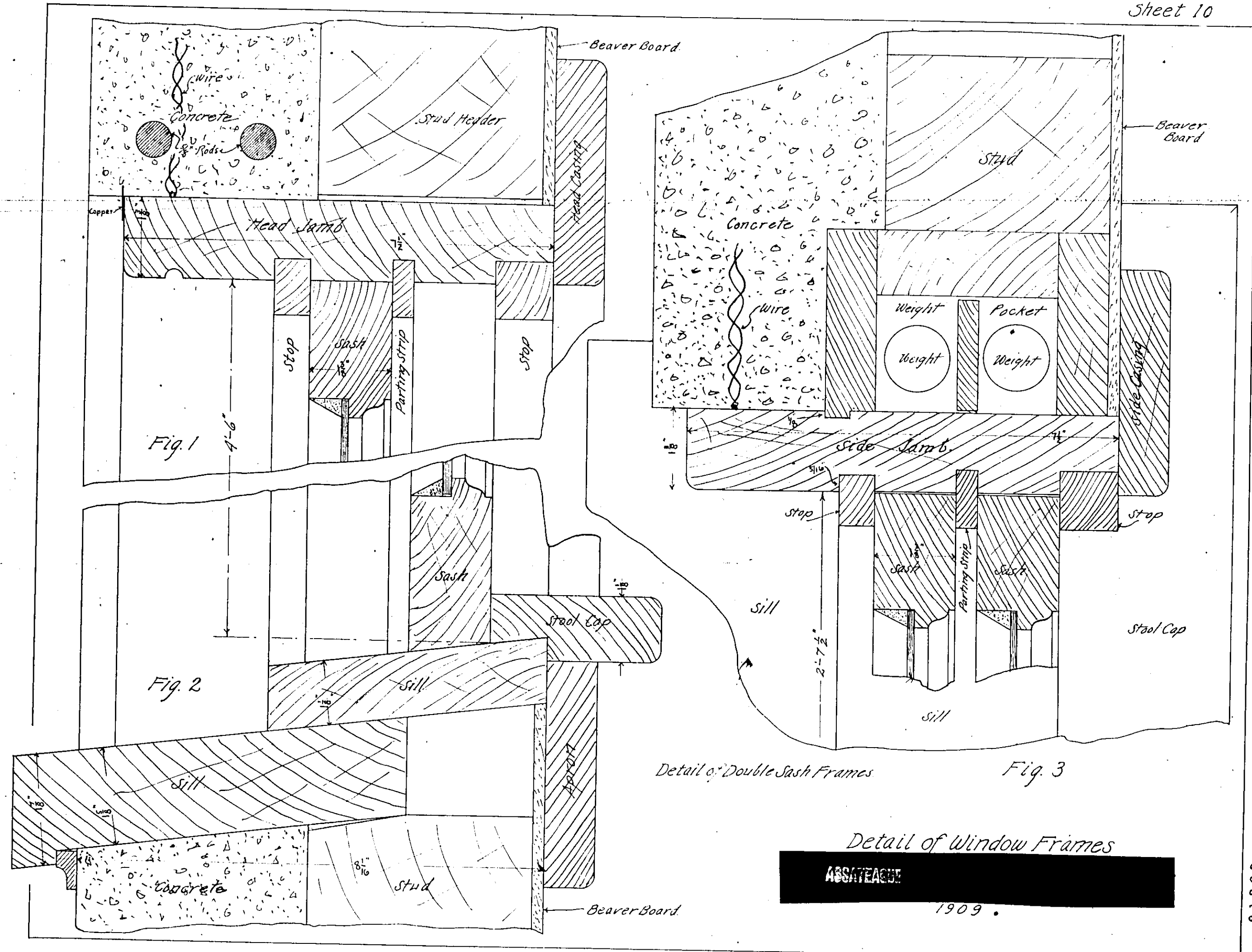


Section C-C (See sheet 1)
Fig 2

Section A-A (See sheet 2)
Fig 3

Sheet No.	Sheet in Set	Checked by Board	Approved by Board	Remarks
Preliminary				
Proposed				
Final				
Plans				
Checked by				
Approved by				
Checked by				
Approved by				

Sections of Walls, Etc.

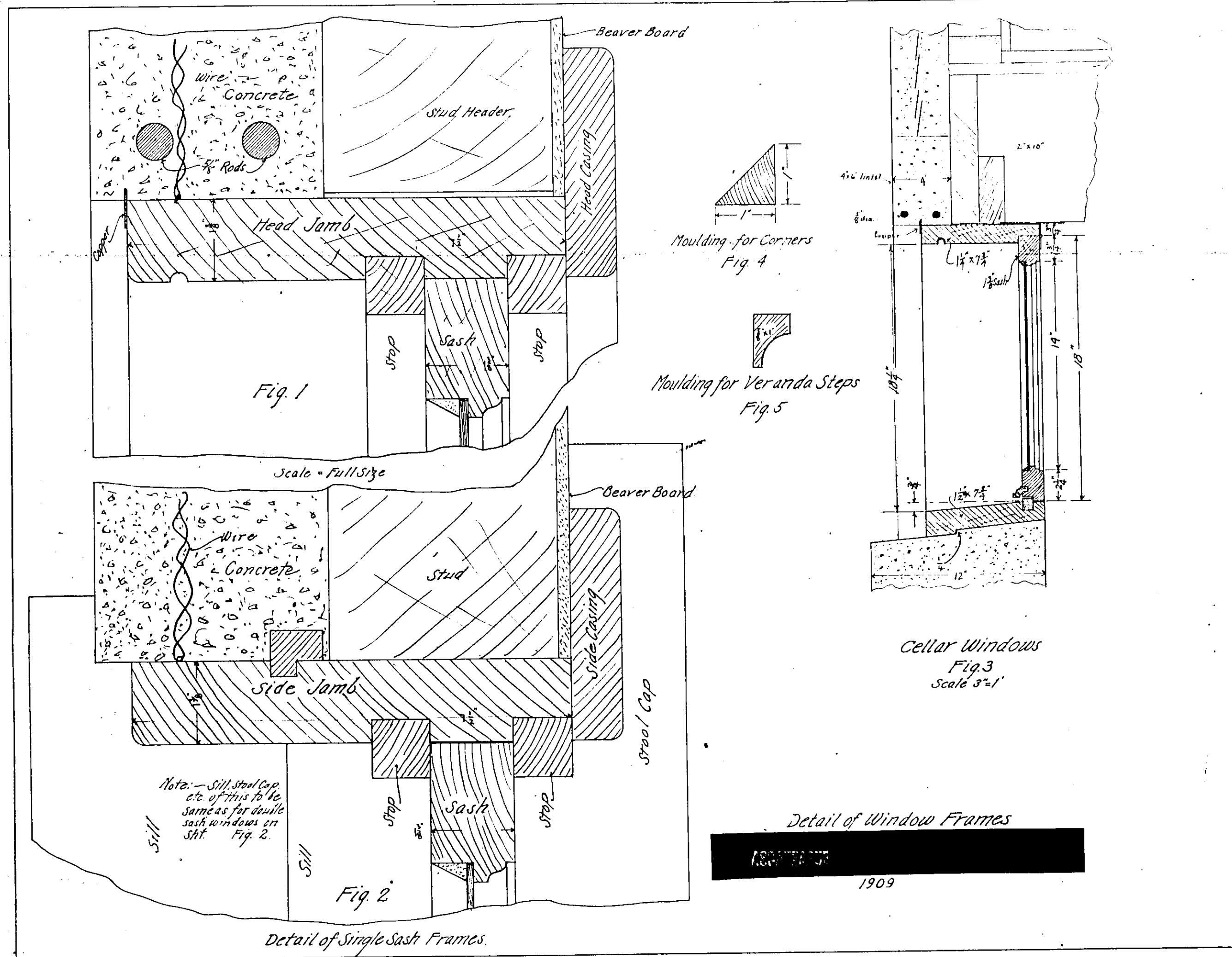


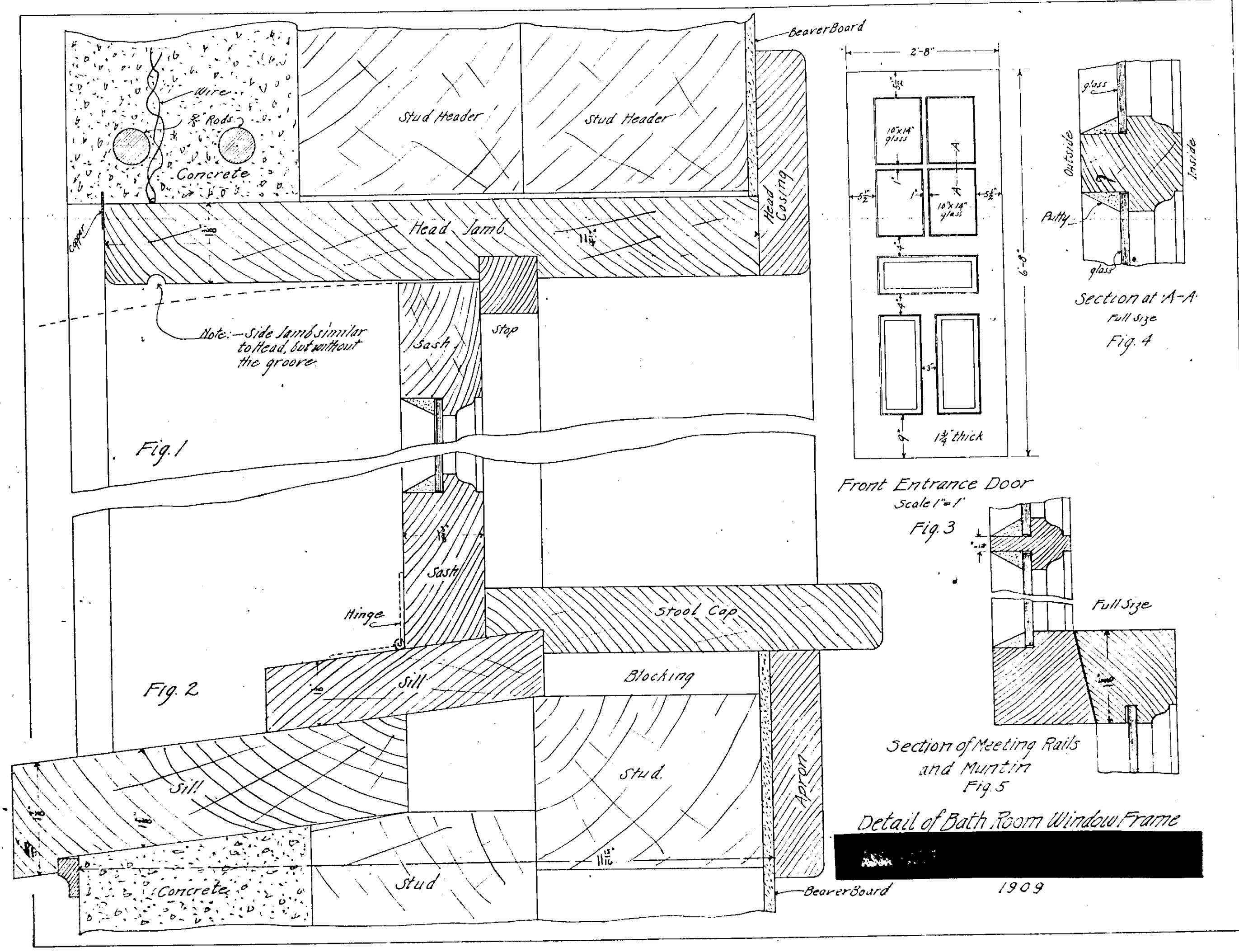
Detail of Double Sash Frames Fig 3

Detail of Window Frames

ABSITEACOR 1909

21268

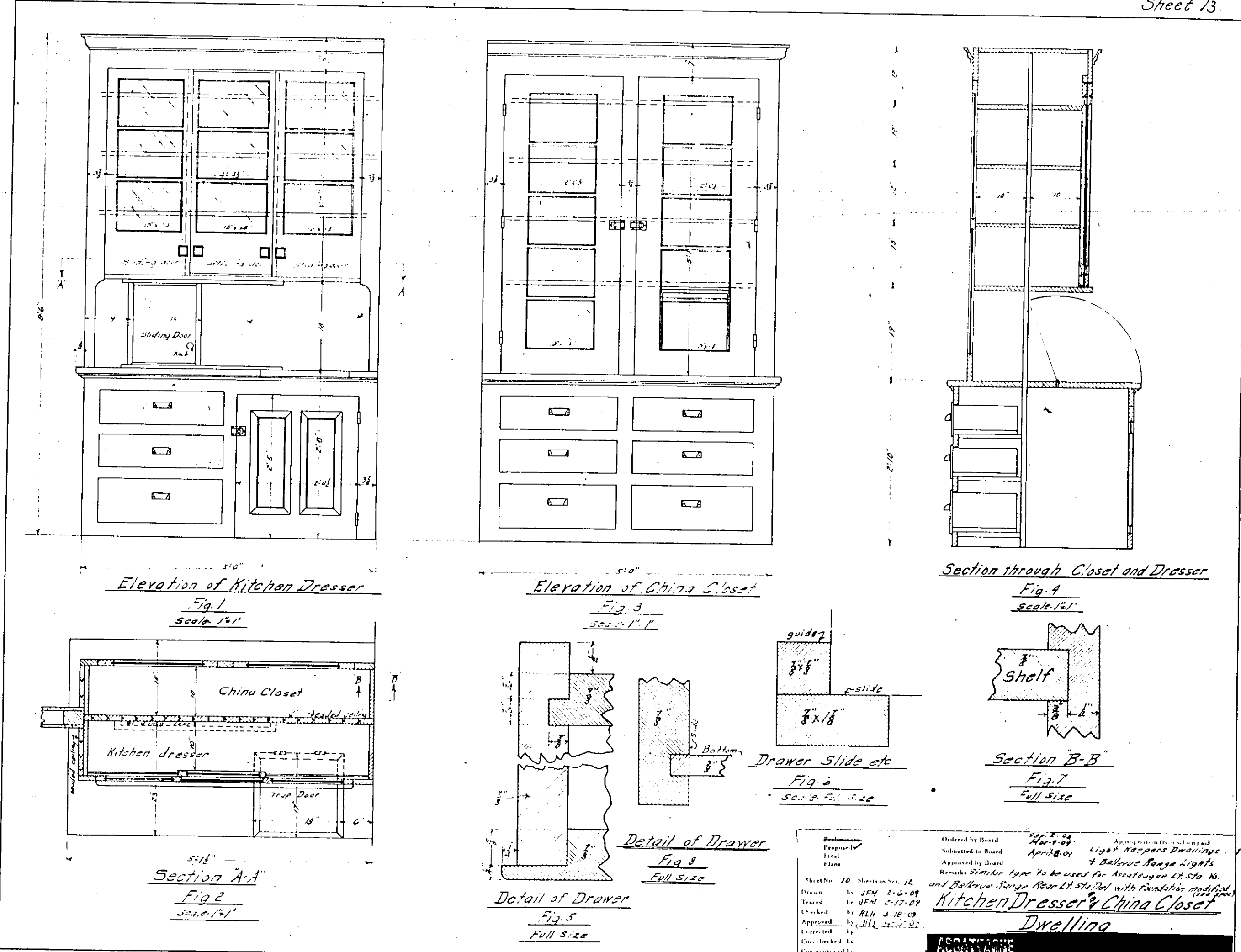




Detail of Bath Room Window Frame

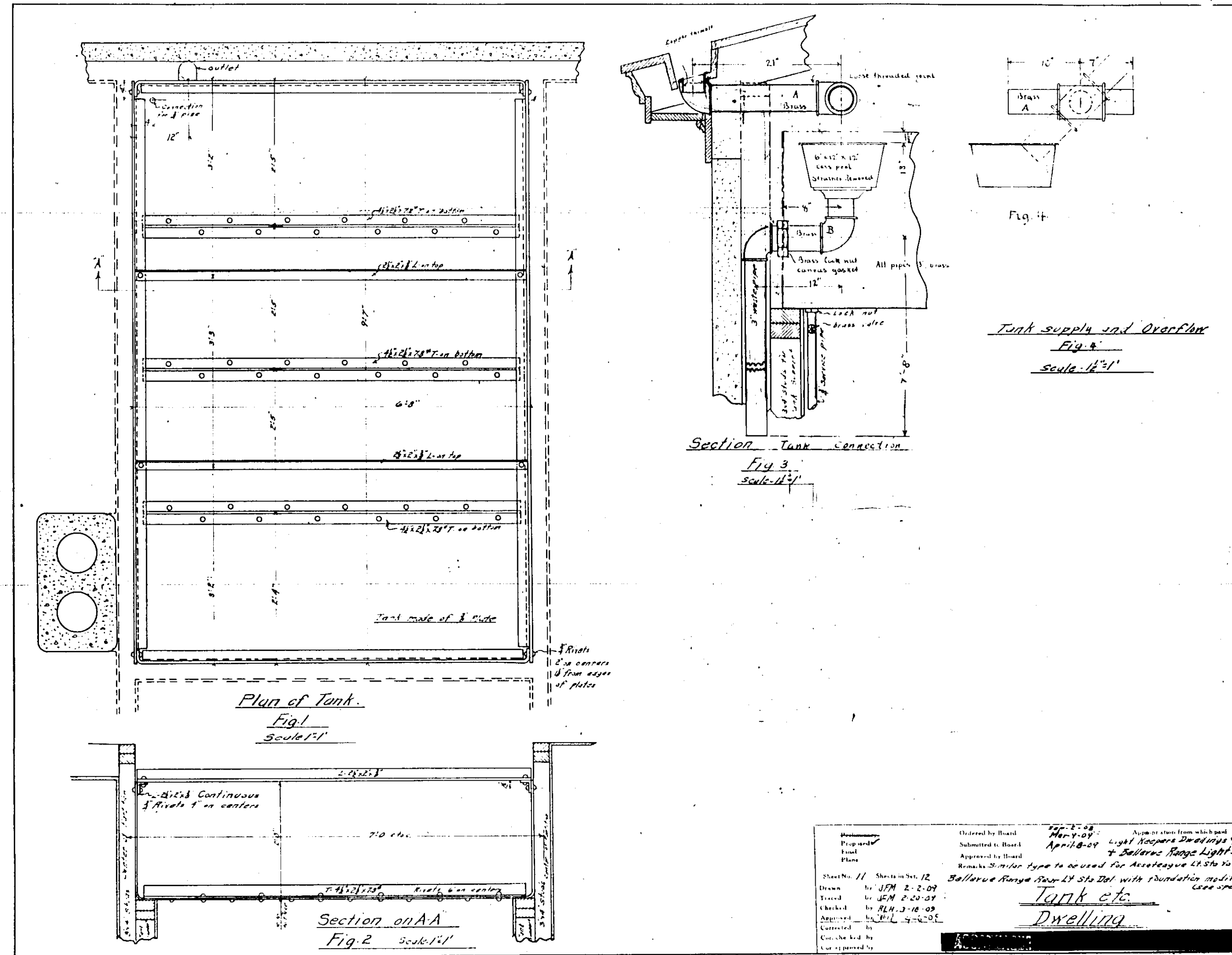
1909

P 1270



Prepared by Board *March 09* Approved by Board *April 09*
 Submitted to Board *March 09* Approved by Board *April 09*
 Plans
 Remarks: *Similar type to be used for the kitchen at Sta. W. and Ballou's Range Room at 97-20 with foundation modified.*
 Kitchen Dresser & China Closet
 Dwelling
 ACOSTA & CO.

21809



Plan of Tank.
Fig. 1
Scale 1/4"

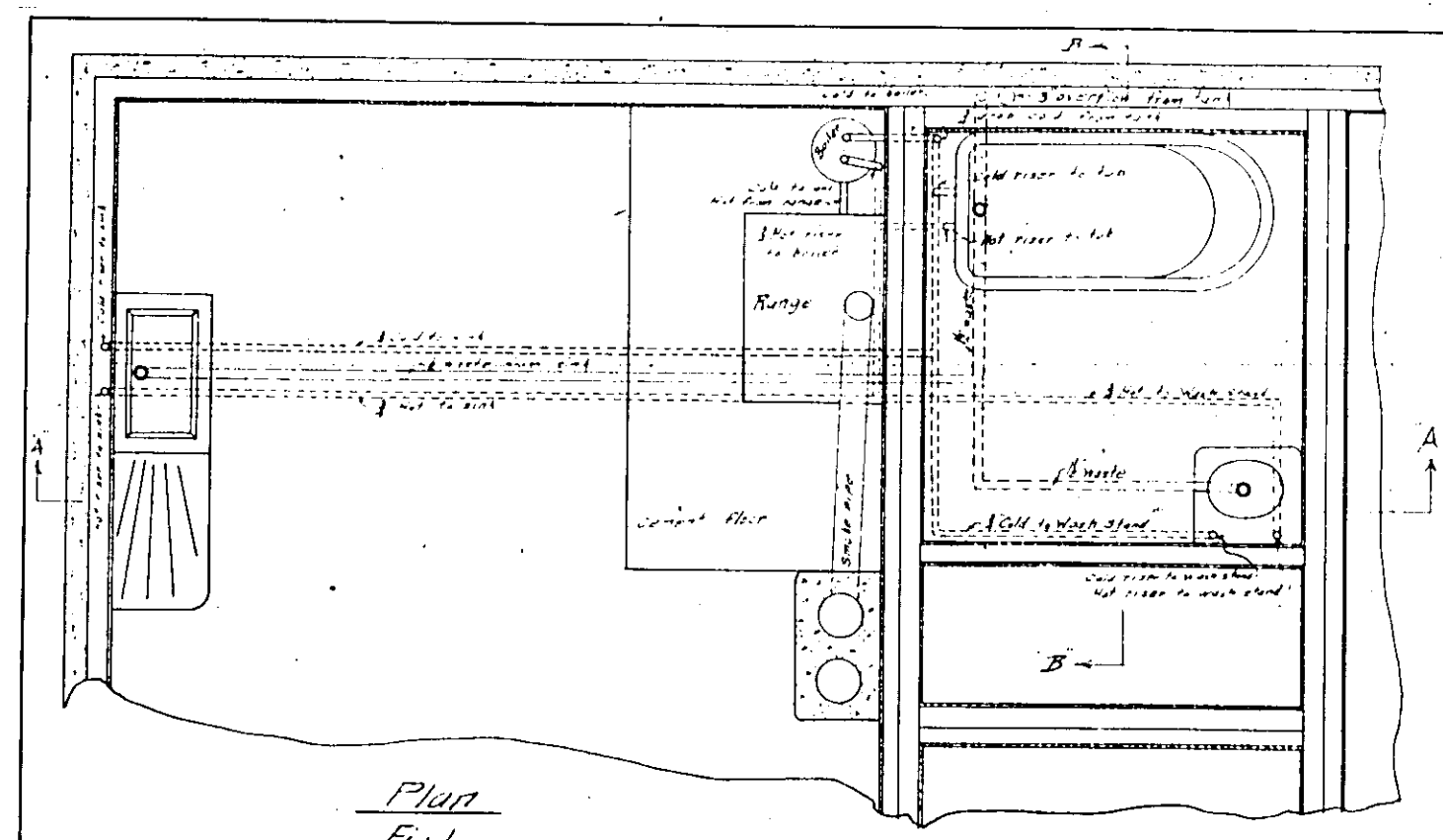
Section on A-A
Fig. 2
Scale 1/4"

Section Tank Connection
Fig. 3
Scale 1/4"

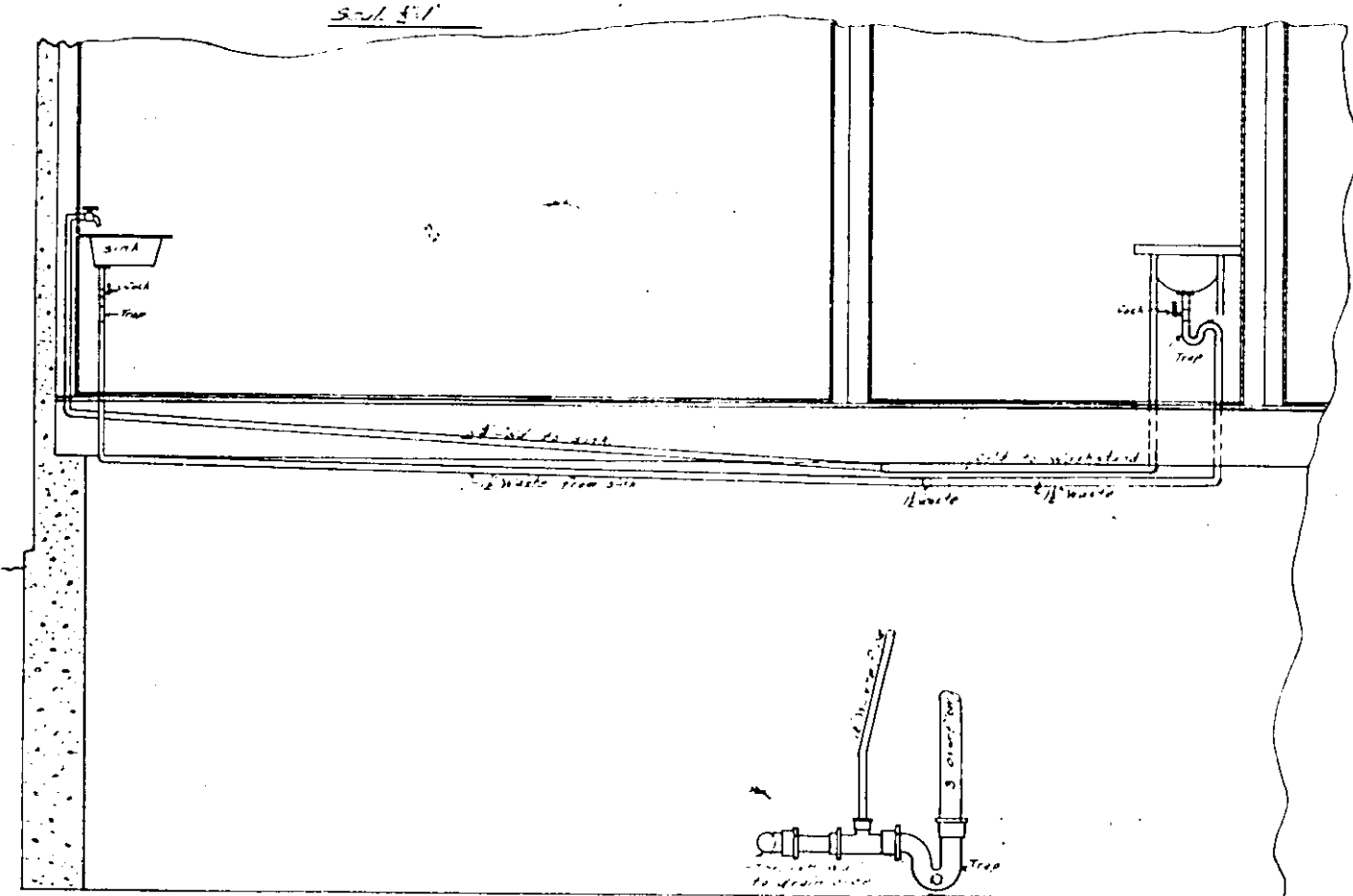
Tank supply and overflow
Fig. 4
Scale 1/4"

Drawn by	JPM 2-2-09	Approved by Board	Apr 10 09
Checked by	JPM 2-2-09	Approved by Board	Apr 10 09
Approved by	JPM 2-2-09	Remarks	Similar type to be used for Assessee's Lt. Sta. 10 and Ballerue Range No. 14 Sta. 201 with foundation modified (see spec.)
Checked by	JPM 2-2-09		
Approved by	JPM 2-2-09		
Checked by	JPM 2-2-09		
Approved by	JPM 2-2-09		

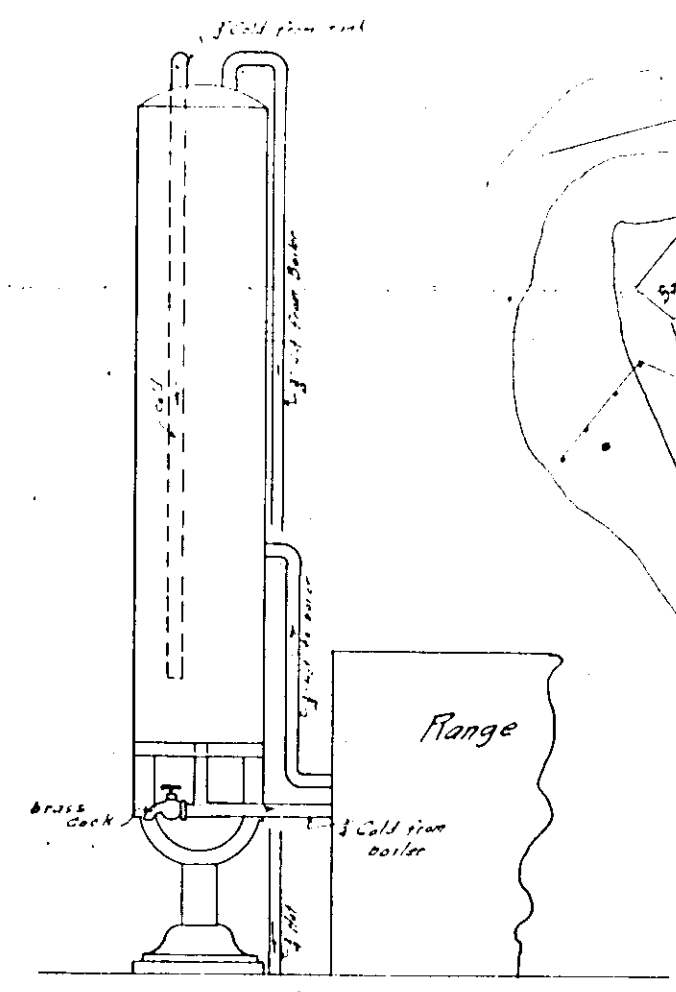
Tank etc.
Dwelling



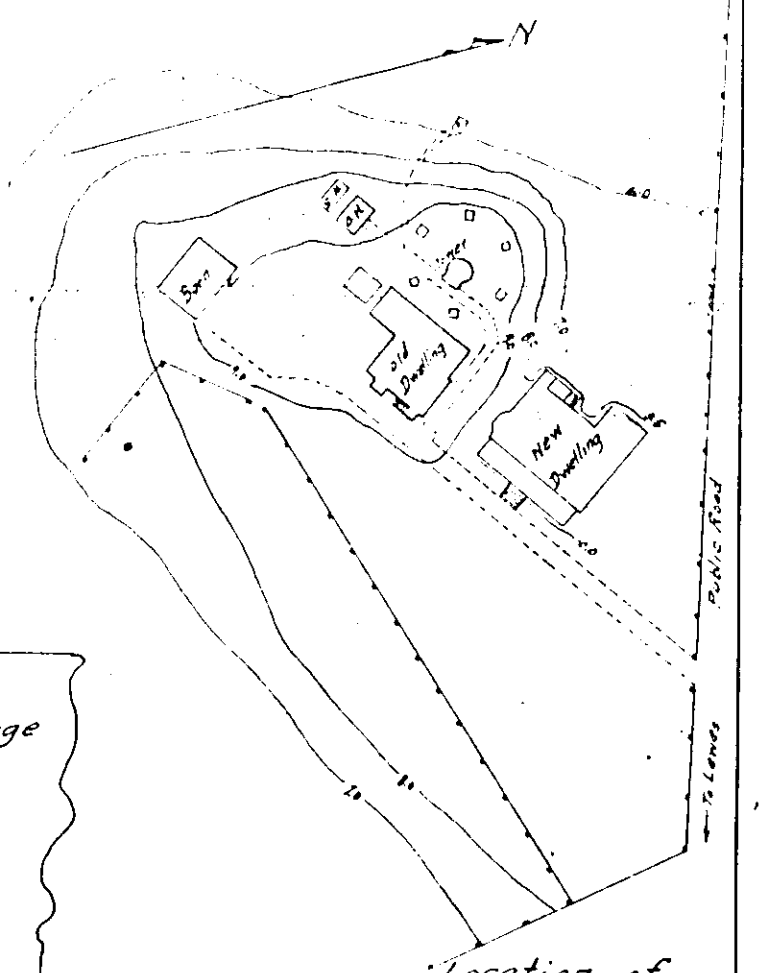
Plan
Fig. 1
Scale 1/4"



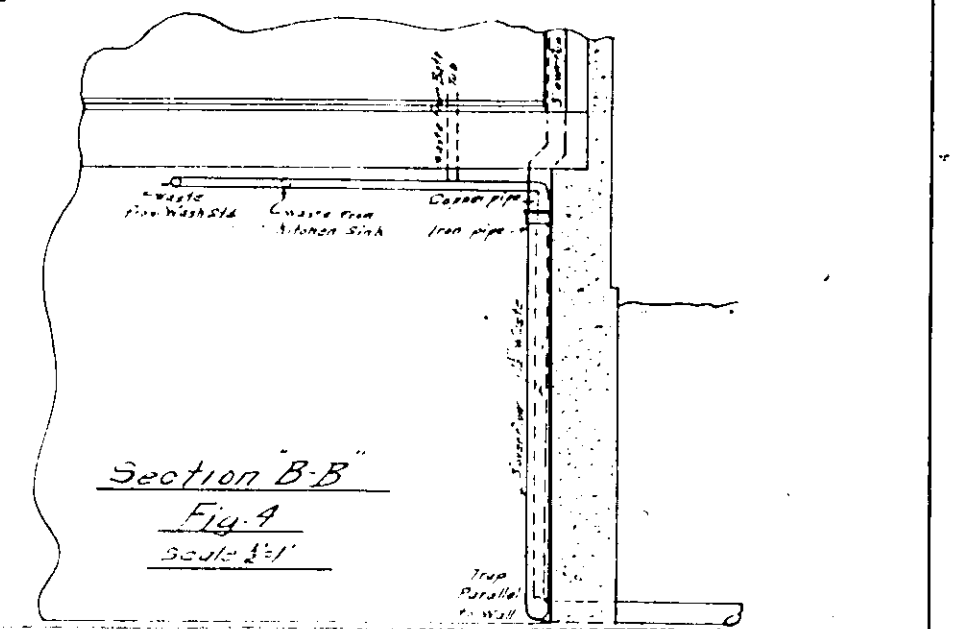
Section A-A
Fig. 2
Scale 1/4"



Boiler & Connections
Fig. 3
Scale 1/4"



Location of
New Dwelling
Fig. 5



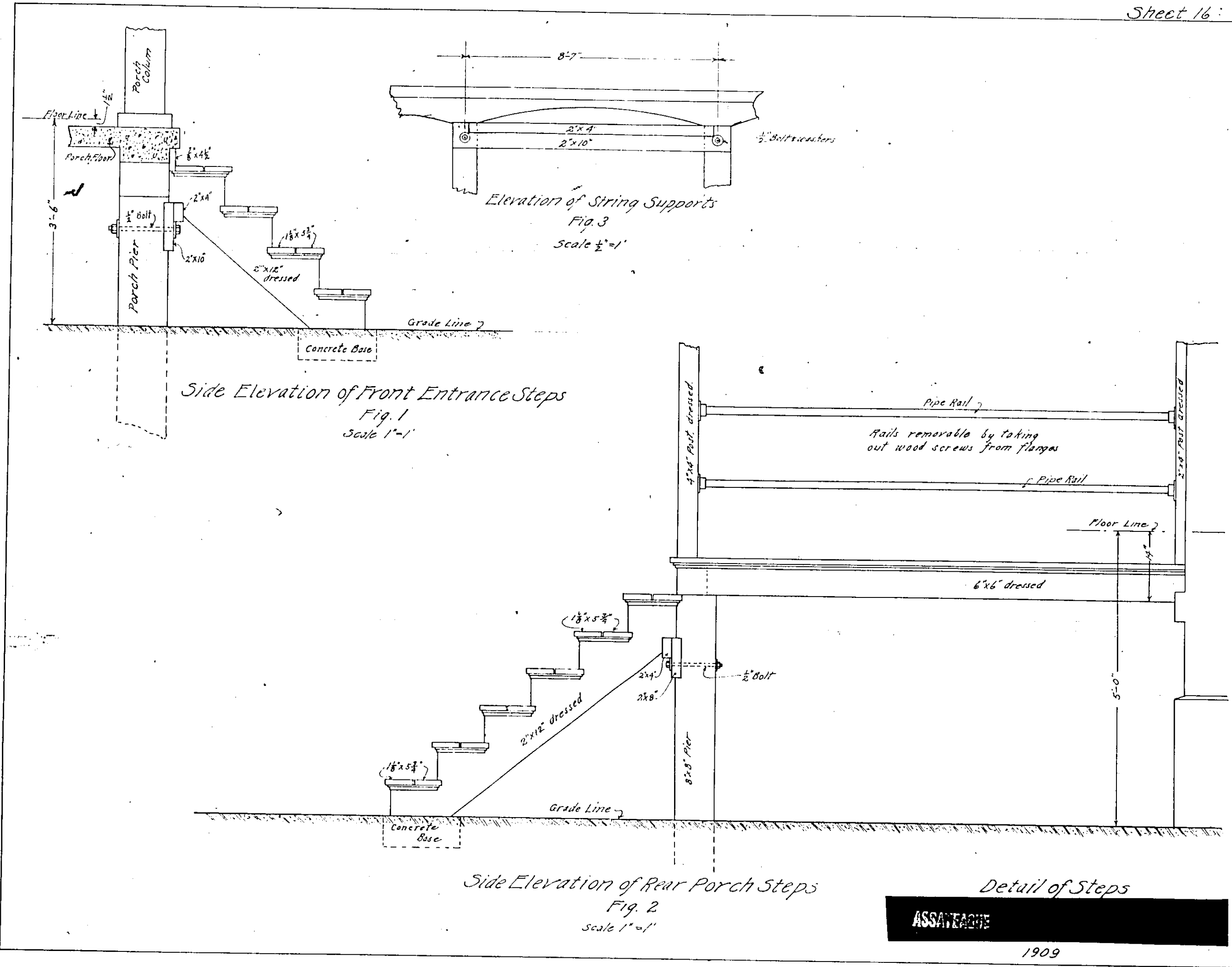
Section B-B
Fig. 4
Scale 1/4"

Designed by	J. W. M.	Approved by	W. L. M.
Drawn by	J. W. M.	Checked by	J. W. M.
Estimated by	J. W. M.	Contracted by	J. W. M.
Executed by	J. W. M.	Approved by	J. W. M.

Note: Light covers 2 1/2" x 3 1/2" + Bolts Range Light
 Bolts similar type to be used for Assessee's
 Bolts similar type to be used for Assessee's
 Bolts similar type to be used for Assessee's

Plumbing Dwelling

ASCHENBACH



ASSAITEAGUE

1909

21271